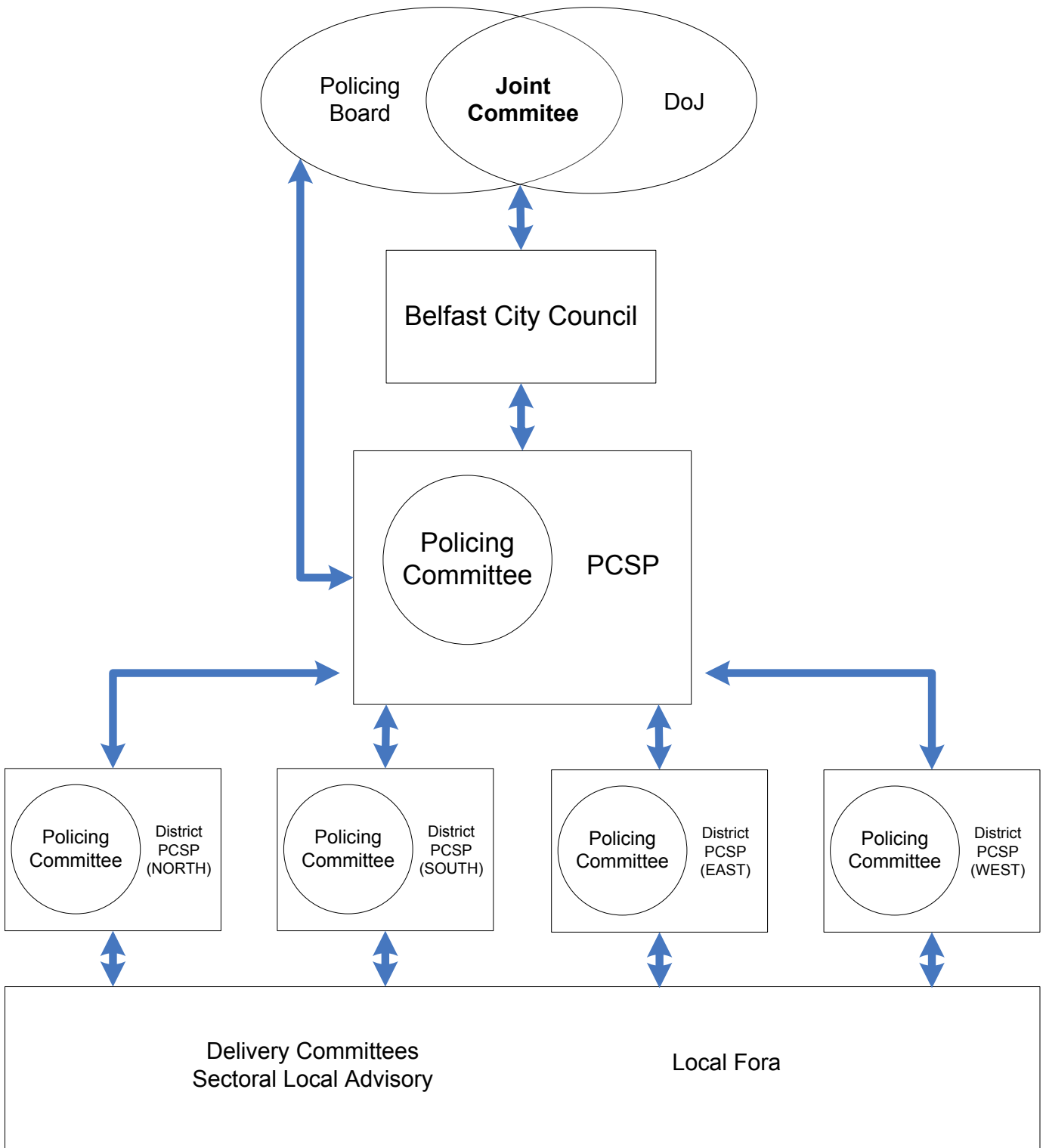


**Proposed Policing and Community Safety Partnerships  
&  
District Policing and Community Safety Partnerships  
(Belfast Model)**



\*It is anticipated that pre-existing relevant groups/for a working on a community level will have informal linkages with PCSPs' engagement activity and through the involvement of other organisations, including PSNI. Information and concerns will be fed back as appropriate.